

P3DV5V6 EN ROUTE NAVDATA PACKAGE

Installer Version 1.x

This set of NVX and ATX BGL files is intended to replace some “stock” files to update navigation information that is no longer up to date in either the default P3DV5 or the P3DV6 scenery components. The provided files were created from scratch using the latest aeronautical information.

The following will be corrected:

- 1) **En route nav aids** (VORs, NDBs, including TACAN records)
- 2) **Airways and en route intersections**

The following elements remain unaffected:

- *Airport data* (especially changed runway identifiers, ILSs, marker data),
- *Terminal NDBs*,
- *Terminal intersections*,
- *Simulator approach procedures* (Note that approaches referencing decommissioned or non-present en route nav aids or intersections may be broken, which may affect AI traffic and automatic ATC).

Installation procedure

The included *P3DV5_NavData_Installer* (as depicted in the screenshot below) or *P3DV6_NavData_Installer* executables will automatically perform the necessary replacements according to the selected regions and elements (En route nav aids, Airways, en route and RNAV fixes).

To work properly, the programs need some text files in the root folder and different subdirectories containing the new BGL files. The extracted package should be kept untouched for the installers to perform normally.

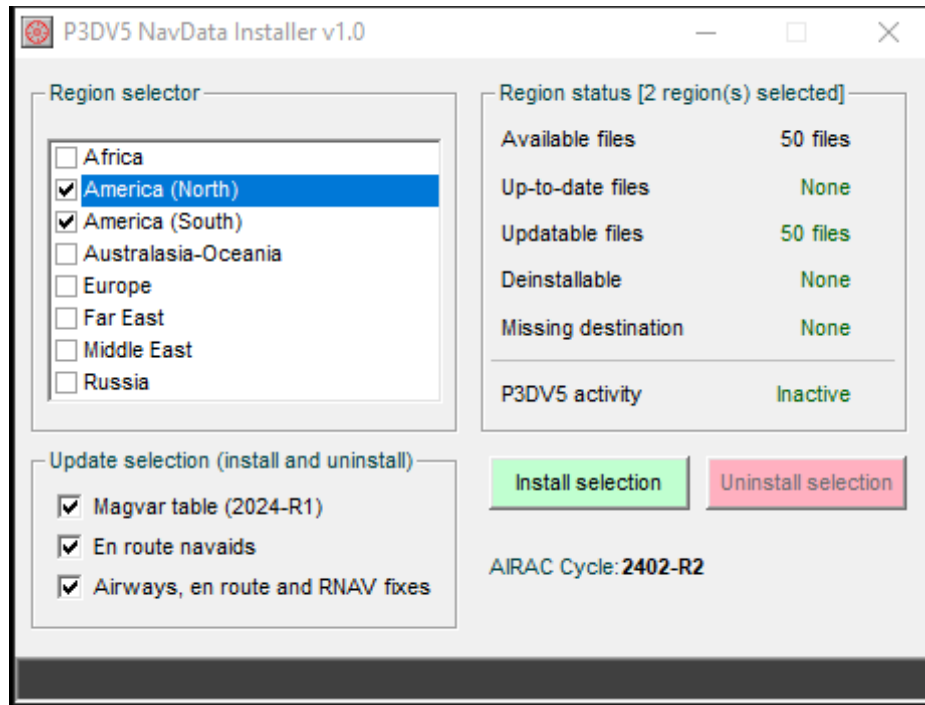
Upon installation, the original files are saved in the original folders with a **.hsbackup** extension so that uninstall can be performed easily. Don't delete them otherwise uninstall may partially or completely fail.

If a new set is installed while a backup of the original files has already been performed, the backup files are preserved, and replacements are based on the detected differences between the previous and current files (file date stamp and lengths).

The installer also provides the possibility to update the magnetic variation table used by the simulator (magdec.bgl) to a current version (2024).

After installation is done you can safely delete the entire package unless you want to modify the installed elements or uninstall some or all of them. Each package revision comes with the exe installers.

Should you encounter a problem, restoring stock simulator files from backup data (Uninstall selection) will restore the selected simulator to its original configuration.



P3DV5 or P3DV6 revision

In the event of installing a new minor version or hotfix of P3DV5 or P3DV6, it is imperative to completely uninstall the current package prior to updating the simulator. Once the update has been completed, you can reinstall it. *This procedure is only necessary if you are updating the scenery component of the simulator.*